

# PRODUCT INFORMATION PACKET

Model No: 256TTDR16027  
Catalog No: E909A  
20,1800,DP,256T,3/60/200  
Open Drip Proof (ODP)



Regal and Marathon are trademarks of Regal Beloit Corporation or one of its affiliated companies.  
©2018 Regal Beloit Corporation, All Rights Reserved. MC017097E



### Nameplate Specifications

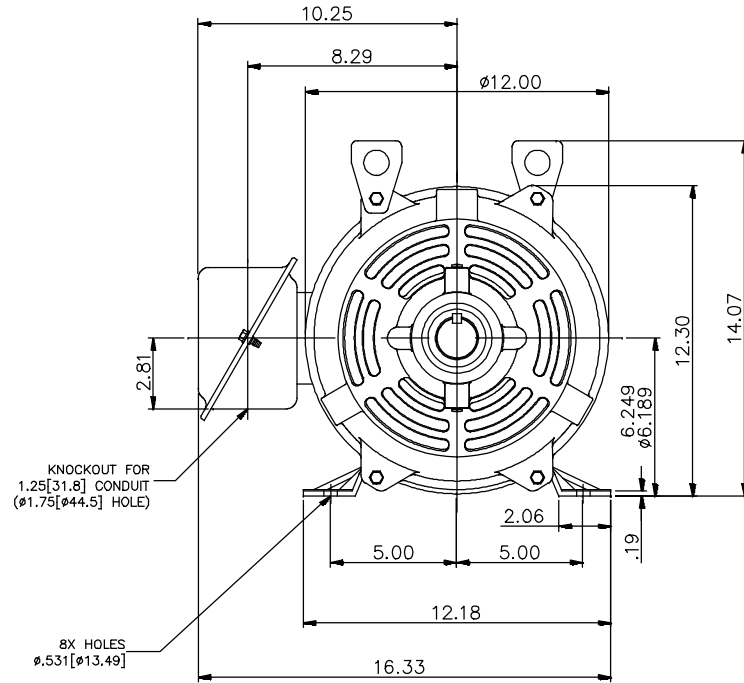
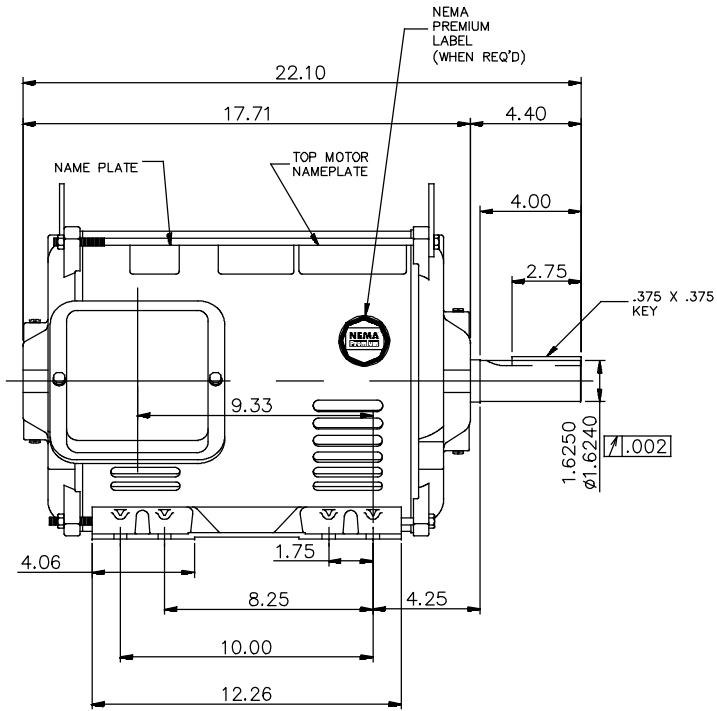
Output HP	<b>20 Hp</b>	Output KW	<b>14.9 kW</b>
Frequency	<b>60 Hz</b>	Voltage	<b>200 V</b>
Current	<b>57.0 A</b>	Speed	<b>1770 rpm</b>
Service Factor	<b>1.15</b>	Phase	<b>3</b>
Efficiency	<b>93.6 %</b>	Duty	<b>Continuous</b>
Insulation Class	<b>F</b>	Design Code	<b>B</b>
KVA Code	<b>G</b>	Frame	<b>256T</b>
Enclosure	<b>Drip Proof</b>	Overload Protector	<b>No</b>
Ambient Temperature	<b>40 °C</b>	Drive End Bearing Size	<b>6309</b>
Opp Drive End Bearing Size	<b>6207</b>	UL	<b>Recognized</b>
CSA	<b>Y</b>	CE	<b>Y</b>
IP Code	<b>12</b>		

### Technical Specifications

Electrical Type	<b>Squirrel Cage Induction Run</b>	Starting Method	<b>Across The Line</b>
Poles	<b>4</b>	Rotation	<b>Reversible</b>
Mounting	<b>Rigid base</b>	Motor Orientation	<b>Horizontal</b>
Drive End Bearing	<b>Ball</b>	Opp Drive End Bearing	<b>Ball</b>
Frame Material	<b>Rolled Steel</b>	Shaft Type	<b>T</b>
Overall Length	<b>22.1 in</b>	Shaft Diameter	<b>1.625 in</b>
Shaft Extension	<b>4 in</b>	Assembly/Box Mounting	<b>F1/F2 Capable</b>
Outline Drawing	<b>037977-1300</b>	Connection Diagram	<b>D0000398-001</b>

This is an uncontrolled document once printed or downloaded and is subject to change without notice. Date Created: 06/29/2018

037977



NOTES:

1. CONDUIT BOX MAY BE ROTATED IN 90° INCREMENTS.
2. MOTOR IS SUITABLE FOR FIELD CONVERSION FROM AN F1 TO AN F2 CONDUIT BOX LOCATION.
3. MOTOR VENTILATION: AIR INTAKE THROUGH OPENINGS IN THE FACE OF EACH BRACKET AND EXHAUSTED THROUGH THE VENT SLOTS ON EACH END OF THE SHELL.

MOTOR DESCRIPTION:

3 PHASE OPEN DRIPPROOF STEEL SHELL 254T OR 256T MOUNTING. OTHER MOUNTING ORIENTATIONS ARE ACCEPTABLE; HOWEVER WHEN MOUNTED OTHER THAN HORIZONTAL; MOTOR WILL NOT BE DRIPPROOF AS DEFINED BY NEMA.

		TOLERANCES UNLESS SPECIFIED		DRAWN PVR 01/28/15
		DEC.	INCHES	
		.X	±.1	APPD
003	ADDED NAME PLATE	MVG 12/12/17	SR .XX ±.03	TITLE OUTLINE
002	CHANGED FROM 20 HP TO 15 HP	AS 01/19/17	ST .XXX ±.005	SCALE 1=4.2
001	ADDED REGAL LOGO	SRK 02/23/16	GR .XXXX ±.0005	REF 18748501-001
NO.	REVISION	BY & DATE	CHK ANG ±7'30"	FMF
THIS DRAWING IN DESIGN AND DETAIL IS OUR PROPERTY AND MUST NOT BE USED EXCEPT IN CONNECTION WITH OUR WORK ALL RIGHTS OF DESIGN AND INVENTION ARE RESERVED THIS IS AN ELECTRONICALLY GENERATED DOCUMENT - DO NOT SCALE THIS PRINT			RFP	PAGE 1 OF 1
			DIST LB	REV. 003



CAD FILE 037977

SIZE A DRAWING NO. 037977



Data Sheet

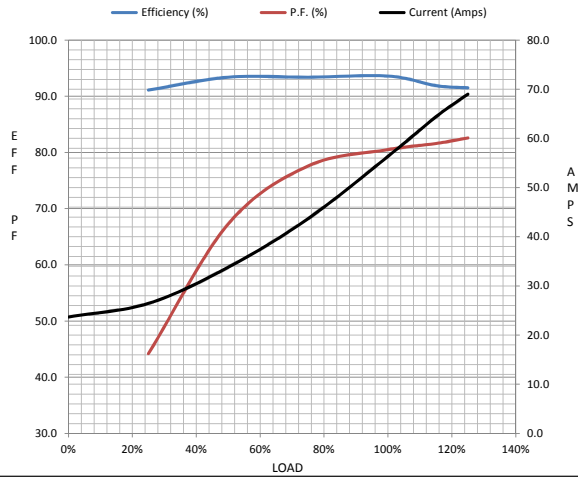
Date: 16-06-2017  
 Customer: \_\_\_\_\_  
 Attention: \_\_\_\_\_  
 Submitted by: FAREEDA DUDEKULA



256TTDR16027  
**Submittal**  
 Data @ 200 V

Motor Load Data									
Load	0%	25%	50%	75%	100%	115%	125%	LR	
Current (Amps)	23.7	26.5	33.8	43.7	56.4	64.4	69.0	322	
Torque (ft-lb)	0.00	14.5	29.0	43.5	58.0	66.7	72.5	115	
RPM	1800	1792	1786	1777	1770	1,765	1755	0	
Efficiency (%)		91.1	93.4	93.4	93.6	91.9	91.5		
P.F. (%)	6.1	44.2	67.3	77.6	80.5	81.6	82.6	0.0	

Motor Speed Data						Information Block	
	LR	Pull-Up	BD	Rated	Idle		
Speed (RPM)	0	885	1656	1770	1800	HP	20.0
Current (Amps)	322	311	193	56.4	23.7	Sync. RPM	1800
Torque (ft-lb)	115	113	160	58.0	0.00	Frame	256
						Enclosure	DP
						Construction	TDR
						Voltage	200 V
						Frequency	60 Hz
						Design	B
						LR Code letter	G
						Service Factor	1.15
						Temp Rise @ FL	35 ° C
						Duty	CONT
						Ambient	40 ° C
						Elevation	1,000 feet
						Rotor/Shaft wk²	0.00 Lb-Ft²
						Ref Wdg	BHR4T01 NONE
						Sound Pressure @ 1M	0 dBA
						VFD Rating	NONE
						Outline Dwg	TBD
						Conn. Diag	D0000398-001



Additional Specifications:				
0				
365THFS8036				
EQUIV CKT (OHMS / PHASE)				
R1	R2	X1	X2	Xm
0.0000	0.0000	0.0000	0.0000	0.0000

